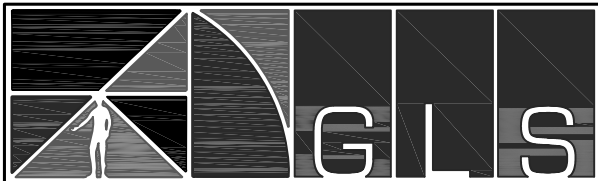
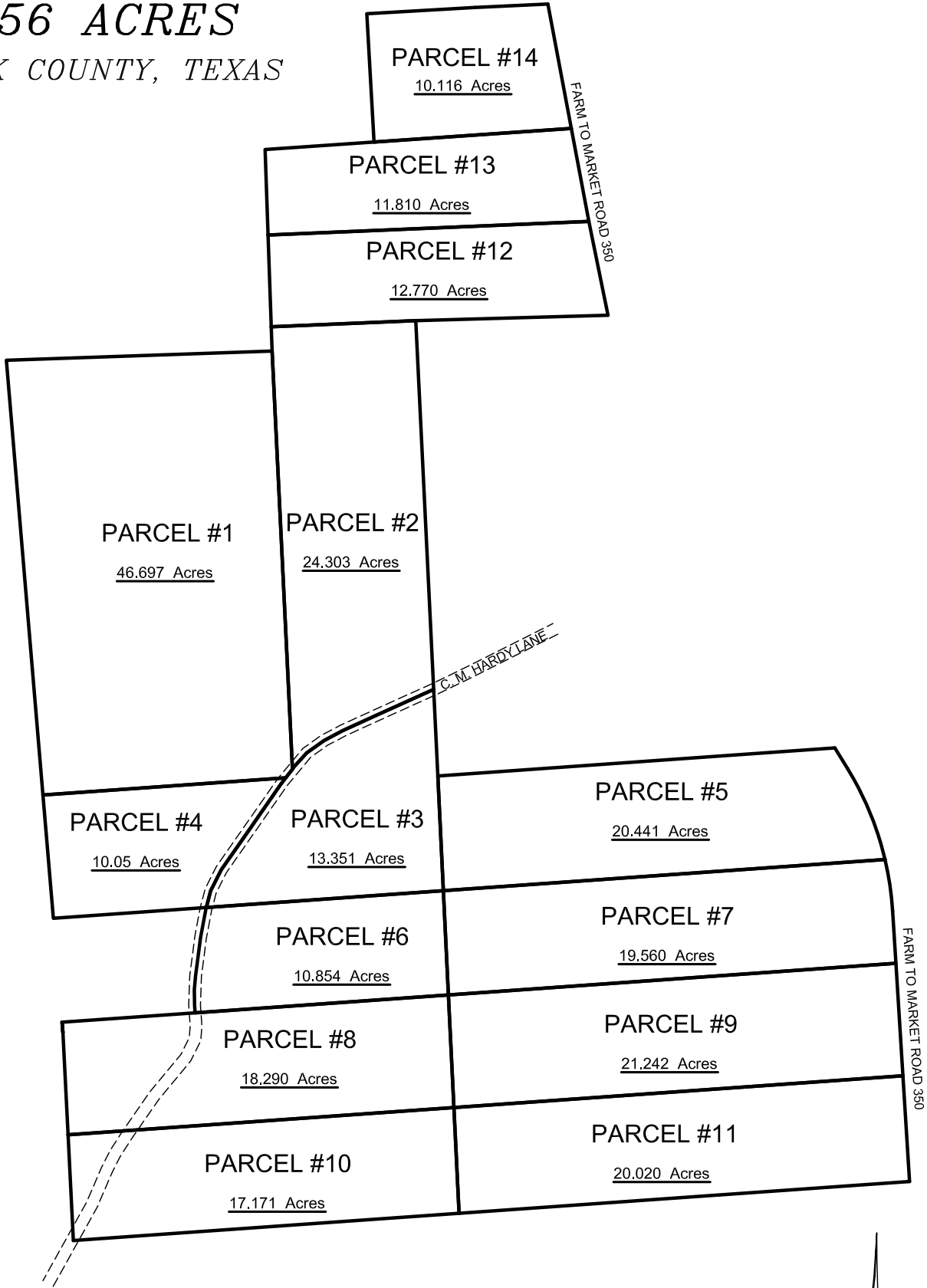
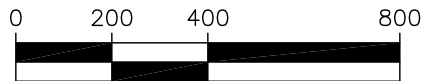


(+/-) 256 ACRES
POLK COUNTY, TEXAS



GOODWIN · LASITER · STRONG
ENGINEERING · ARCHITECTURE · INTERIOR DESIGN · SURVEYING
1609 S. CHESTNUT ST. STE. 202 - LUFKIN, TEXAS 75901 - (936) 637-4900
4077 CROSS PARK DR. STE. 100 - BRYAN, TEXAS 77802 - (979) 776-9700



SCALE: 1" = 400'



©2016 ALL RIGHTS RESERVED BY GOODWIN-LASITER, INC. UNAUTHORIZED USE OR REPRODUCTION IS PROHIBITED WITHOUT WRITTEN CONSENT FROM GOODWIN-LASITER, INC.

TBPE FIRM REGISTRATION #413 - TBPLS FIRM REGISTRATION #10110900