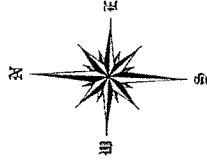
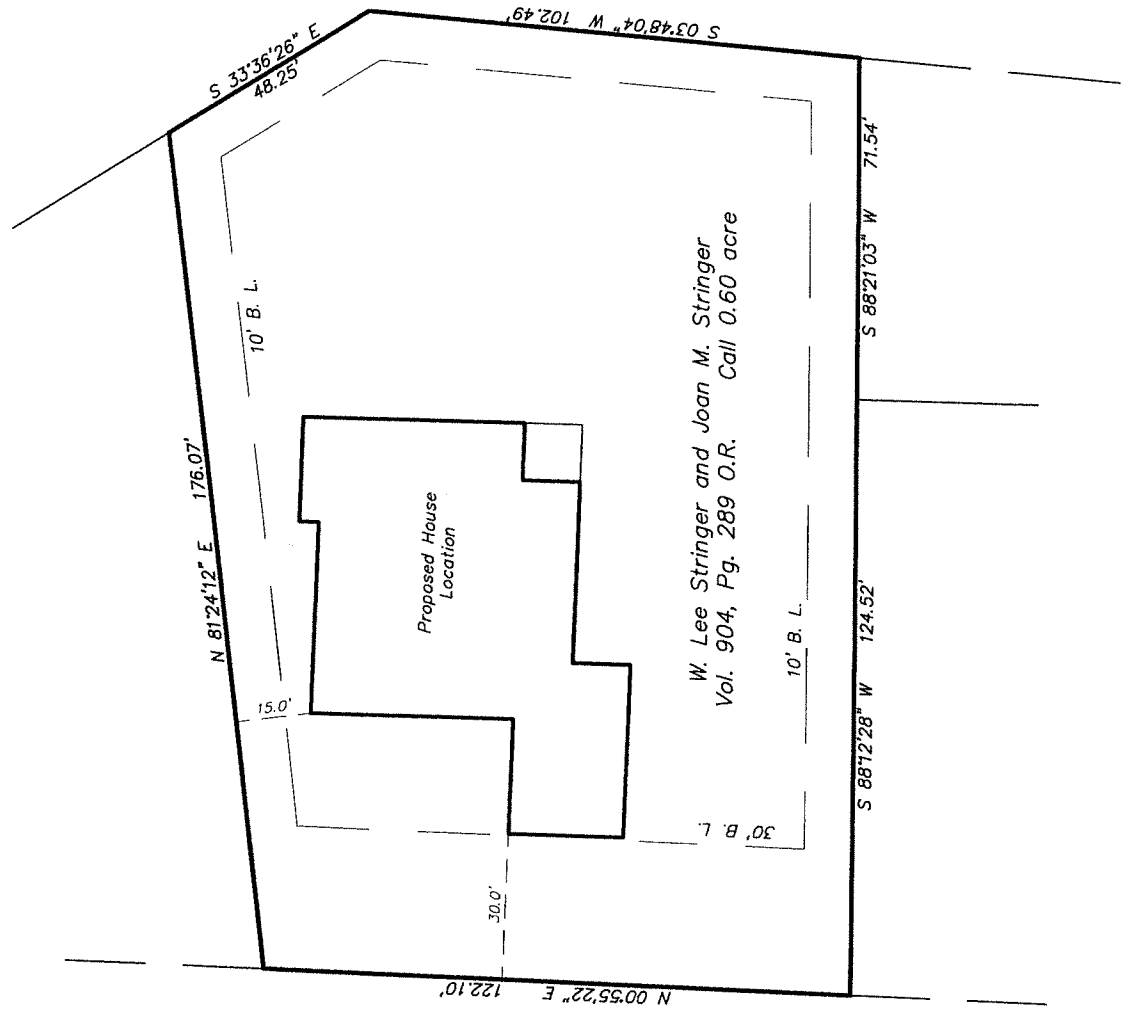


R  
A  
V  
E  
N  
U  
E



**NOTES:**

1. Bearings/distances shown hereon are based on deed calls (Volume 904, Page 289 O.R.) and does not represent field measurements by Fuller and Associates, Surveyors;
2. Based on verbal information, a City of Huntsville sanitary sewer line MAY cross this property. It's existence was not noted on a survey by Ron Lange (December, 2002). This site plan makes no attempt to verify its location.
3. Building restrictions are recorded in Volume 166, Page 319, Deed Records.

SITE PLAN OF

# W. LEE STRINGER 0.60 ACRE TRACT

In the P. GRAY SURVEY, A-24  
Walker County, Texas

January, 2010

**Scale: 1" = 40 Feet**

FULLER and ASSOCIATES  
Huntsville, Texas

FILE: STRINGER Lee-0.60ac-Ave R-SitePlan \2010\