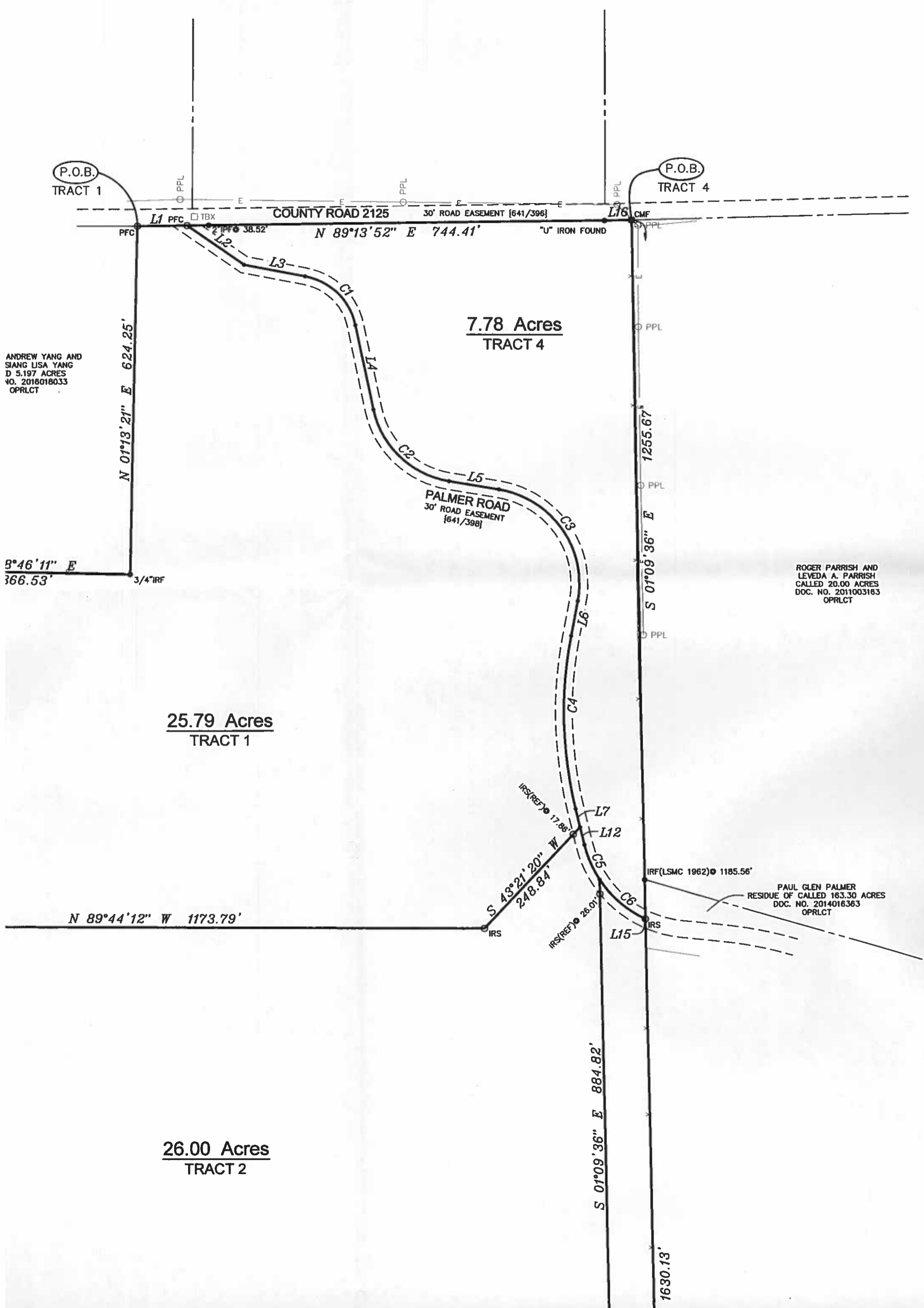


LIBERTY COUNTY, TEXAS



P.O.B.
TRACT 1

P.O.B.
TRACT 4

ANDREW YANG AND
SIANG LISA YANG
D 5.197 ACRES
NO. 2016018033
OPRLCT

ROGER PARRISH AND
LEVEDA A. PARRISH
CALLED 20.00 ACRES
DOC. NO. 2011003163
OPRLCT

PAUL GLEN PALMER
RESIDUE OF CALLED 163.30 ACRES
DOC. NO. 2014016363
OPRLCT

25.79 Acres
TRACT 1

7.78 Acres
TRACT 4

26.00 Acres
TRACT 2

N 01°13'21" E 624.25'

8°46'11" E
366.53'

3/4" IRF

COUNTY ROAD 2125
30' ROAD EASEMENT [641/396]

N 89°13'52" E 744.41'

"U" IRON FOUND

PALMER ROAD
30' ROAD EASEMENT
[641/398]

S 01°09'36" E
1255.67'

N 89°44'12" W 1173.79'

S 43°21'20" W
248.84'

S 01°09'36" E 884.82'

1630.13'

L1 PFC

TBX

L2 PFC

L3 PFC

L4 PFC

L5 PFC

L6 PFC

L7 PFC

L8 PFC

L9 PFC

L10 PFC

L11 PFC

L12 PFC

L13 PFC

L14 PFC

L15 PFC

L16 PFC

L17 PFC

L18 PFC

L19 PFC

L20 PFC

L21 PFC

L22 PFC

L23 PFC

L24 PFC

L25 PFC

L26 PFC

L27 PFC

L28 PFC

L29 PFC

L30 PFC

L31 PFC

L32 PFC

L33 PFC

L34 PFC

L35 PFC

L36 PFC

L37 PFC

L38 PFC

L39 PFC

L40 PFC

L41 PFC

L42 PFC

L43 PFC

L44 PFC

L45 PFC

L46 PFC

L47 PFC

L48 PFC

L49 PFC

L50 PFC

L51 PFC

L52 PFC

L53 PFC

L54 PFC

L55 PFC