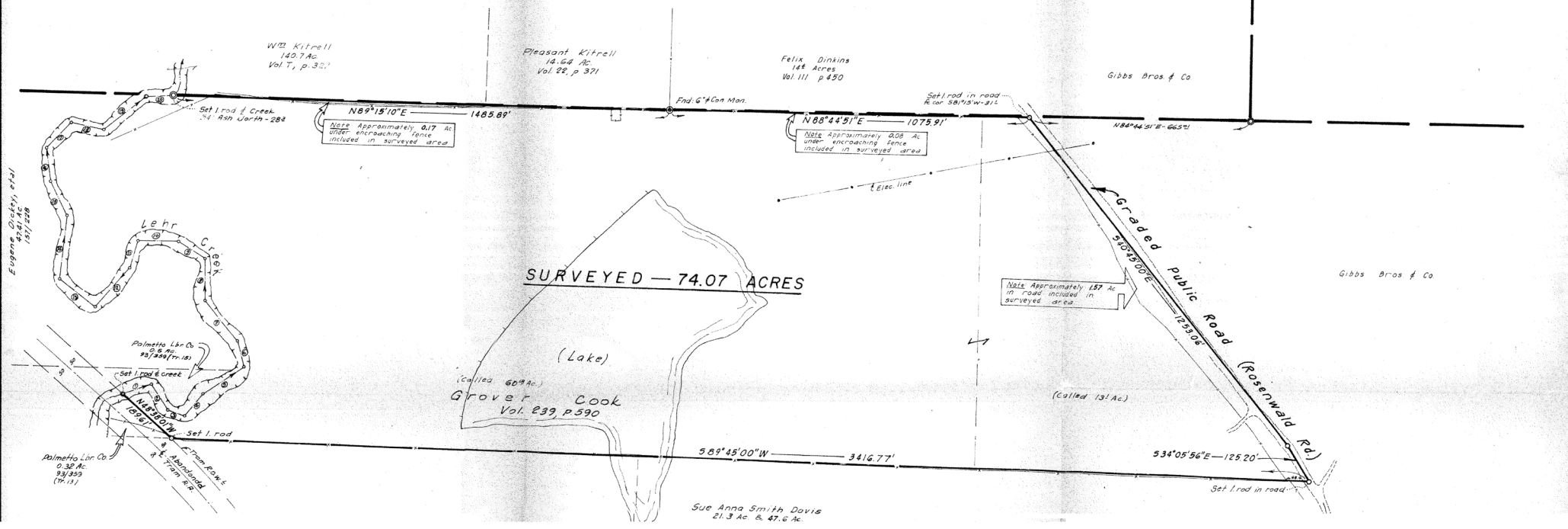


GEO. E. HUNTER SURVEY
A — 251

T. DAVIS SURVEY
A-738



Eugene Grady, et al
151/226

Wm. Kitrell
140.7 Ac
Vol T, p. 327

Pleasant Kitrell
14.64 Ac
Vol. 22, p. 371

Felix Dinkins
14 1/2 Acres
Vol. 111 p. 450

Gibbs Bros & Co

Set 1 rod of Creek
24 1/2 North - 28 1/2

N88°15'10"E
1485.89'
Note: Approximately 0.17 Ac
under encroaching fence
included in surveyed area.

End G. & Con Man.

Set rod in road
R cor 58°15'W-312

N88°44'51"E
1075.91'
Note: Approximately 208 Ac
under encroaching fence
included in surveyed area.

N88°44'51"E-665.71'

Elec. line

SURVEYED - 74.07 ACRES

Note: Approximately 157 Ac
of road included in
surveyed area.

Gibbs Bros & Co

Lehr
C. 18 X

Palmetto Lbr Co
5.6 Ac
23/289 (Tr. 18)

Set 1 rod of Creek

Palmetto Lbr Co
0.32 Ac
23/289
(Tr. 18)

Grover Cook
Vol. 239, p. 590

(Called 60.9 Ac.)

(Called 13.1 Ac.)

S89°45'00"W
3416.77'

S34°05'56"E-125.20'

Sue Anna Smith Davis
21.3 Ac & 47.6 Ac

Set 1 rod in road

Graded Public Road
(Rosenwald Rd.)
570°30'00"E
125.505'