



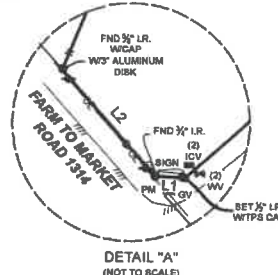
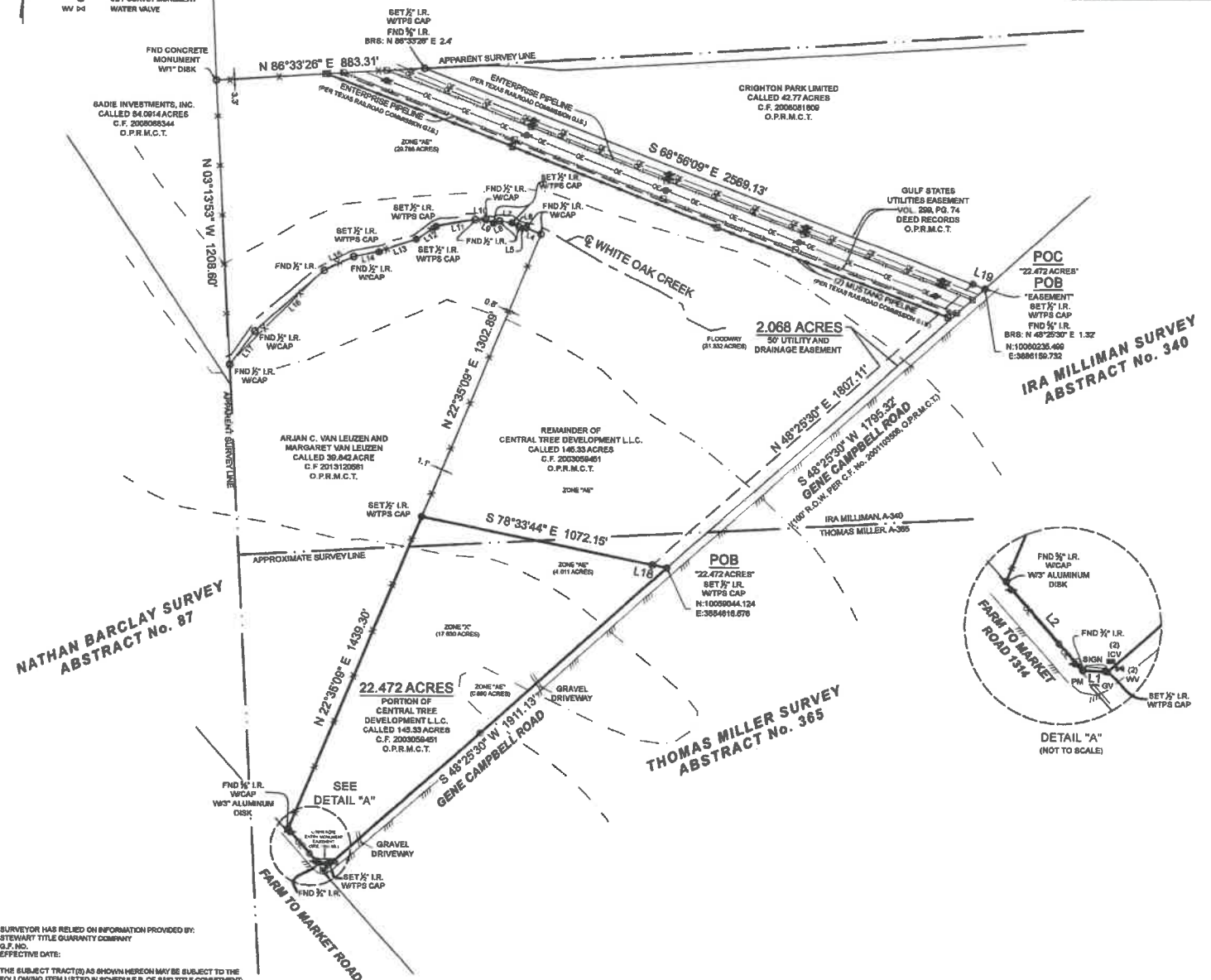
SYMBOL LEGEND

- EDGE OF ASPHALT
- FEM (APPROXIMATE UNITS, SCALED PER FEMA)
- WIRE FENCE
- POC () FIBER OPTIC CABLE MARKER
- FOUND SURVEY MONUMENT
- GV () GAS VALVE
- GUY WIRE
- ICV () IRRIGATION CONTROL VALVE
- PM () PIPELINE MARKER
- POWER POLE
- SET SURVEY MONUMENT
- WATER VALVE

CRIGHTON PARK LIMITED
CALLED 412.041 ACRES
C.F. 2008054289
O.P.R.M.C.T.

**CHARLES STEPHENS SURVEY
ABSTRACT No. 482**

LINE	BEARING	DISTANCE
1	N 22° 35' 00" W	21.89
2	N 21° 45' 00" W	189.25
3	N 21° 45' 00" W	225.25
4	N 88° 33' 26" E	70.00
5	N 88° 33' 26" E	21.89
6	N 60° 57' 14" W	35.79
7	N 60° 57' 14" W	35.79
8	N 60° 57' 14" W	35.79
9	N 60° 57' 14" W	35.79
10	N 60° 57' 14" W	35.79
11	N 60° 57' 14" W	35.79
12	N 60° 57' 14" W	35.79
13	N 60° 57' 14" W	35.79
14	N 60° 57' 14" W	35.79
15	N 60° 57' 14" W	35.79
16	N 60° 57' 14" W	35.79
17	N 60° 57' 14" W	35.79
18	N 60° 57' 14" W	35.79
19	N 60° 57' 14" W	35.79
20	N 60° 57' 14" W	35.79
21	N 60° 57' 14" W	35.79
22	N 60° 57' 14" W	35.79
23	N 60° 57' 14" W	35.79
24	N 60° 57' 14" W	35.79
25	N 60° 57' 14" W	35.79
26	N 60° 57' 14" W	35.79
27	N 60° 57' 14" W	35.79
28	N 60° 57' 14" W	35.79
29	N 60° 57' 14" W	35.79
30	N 60° 57' 14" W	35.79
31	N 60° 57' 14" W	35.79
32	N 60° 57' 14" W	35.79
33	N 60° 57' 14" W	35.79
34	N 60° 57' 14" W	35.79
35	N 60° 57' 14" W	35.79
36	N 60° 57' 14" W	35.79
37	N 60° 57' 14" W	35.79
38	N 60° 57' 14" W	35.79
39	N 60° 57' 14" W	35.79
40	N 60° 57' 14" W	35.79
41	N 60° 57' 14" W	35.79
42	N 60° 57' 14" W	35.79
43	N 60° 57' 14" W	35.79
44	N 60° 57' 14" W	35.79
45	N 60° 57' 14" W	35.79
46	N 60° 57' 14" W	35.79
47	N 60° 57' 14" W	35.79
48	N 60° 57' 14" W	35.79
49	N 60° 57' 14" W	35.79
50	N 60° 57' 14" W	35.79
51	N 60° 57' 14" W	35.79
52	N 60° 57' 14" W	35.79
53	N 60° 57' 14" W	35.79
54	N 60° 57' 14" W	35.79
55	N 60° 57' 14" W	35.79
56	N 60° 57' 14" W	35.79
57	N 60° 57' 14" W	35.79
58	N 60° 57' 14" W	35.79
59	N 60° 57' 14" W	35.79
60	N 60° 57' 14" W	35.79
61	N 60° 57' 14" W	35.79
62	N 60° 57' 14" W	35.79
63	N 60° 57' 14" W	35.79
64	N 60° 57' 14" W	35.79
65	N 60° 57' 14" W	35.79
66	N 60° 57' 14" W	35.79
67	N 60° 57' 14" W	35.79
68	N 60° 57' 14" W	35.79
69	N 60° 57' 14" W	35.79
70	N 60° 57' 14" W	35.79
71	N 60° 57' 14" W	35.79
72	N 60° 57' 14" W	35.79
73	N 60° 57' 14" W	35.79
74	N 60° 57' 14" W	35.79
75	N 60° 57' 14" W	35.79
76	N 60° 57' 14" W	35.79
77	N 60° 57' 14" W	35.79
78	N 60° 57' 14" W	35.79
79	N 60° 57' 14" W	35.79
80	N 60° 57' 14" W	35.79
81	N 60° 57' 14" W	35.79
82	N 60° 57' 14" W	35.79
83	N 60° 57' 14" W	35.79
84	N 60° 57' 14" W	35.79
85	N 60° 57' 14" W	35.79
86	N 60° 57' 14" W	35.79
87	N 60° 57' 14" W	35.79
88	N 60° 57' 14" W	35.79
89	N 60° 57' 14" W	35.79
90	N 60° 57' 14" W	35.79
91	N 60° 57' 14" W	35.79
92	N 60° 57' 14" W	35.79
93	N 60° 57' 14" W	35.79
94	N 60° 57' 14" W	35.79
95	N 60° 57' 14" W	35.79
96	N 60° 57' 14" W	35.79
97	N 60° 57' 14" W	35.79
98	N 60° 57' 14" W	35.79
99	N 60° 57' 14" W	35.79
100	N 60° 57' 14" W	35.79



SURVEYOR HAS RELIED ON INFORMATION PROVIDED BY:
STEWART TITLE GUARANTY COMPANY
C.F. NO. [REDACTED]
EFFECTIVE DATE: [REDACTED]

THE SUBJECT TRACT(S) AS SHOWN HEREON MAY BE SUBJECT TO THE FOLLOWING ITEM LISTED IN SCHEDULE B, OF SAID TITLE COMMITMENT:

- 10B. 150' EASEMENT GULF STATES UTILITIES COMPANY PER VOL. 290, PG. 74, D.R.M.C.T. (DOES NOT AFFECT)
- 10C. 10' EASEMENT TO GULF STATES UTILITIES COMPANY PER VOL. 389, PG. 208, D.R.M.C.T. (DOES NOT AFFECT)
- 10D. 10' PIPELINE R.O.W. EASEMENT TO DANNON SHAMROCK CORPORATION PER VOL. 110, PG. 78, D.R.M.C.T. AND AMENDED PER C.F. No. 821248, R.P.R.M.C.T. (DOES NOT AFFECT)
- 10E. PIPELINE R.O.W. EASEMENT TO MUSTANG PIPELINE COMPANY PER VOL. 724, PG. 81, D.R.M.C.T. (DOES NOT AFFECT)
- 10F. DRILL SITES TOGETHER WITH ACCESS EASEMENTS C.F. No. 854108, 842982 AND 866352, R.P.R.M.C.T. AND DESIGNATED SURFACE SITES AND NON-EXCLUSIVE ACCESS EASEMENTS PER C.F. No. 887430, 881491, 2002106474 AND 2005133448, R.P.R.M.C.T. (DOES NOT AFFECT)
- 10G. 10' DRILL SITES TOGETHER WITH ACCESS EASEMENTS PER VOL. 1141, PG. 770 AND 1147, PG. 88, D.R.M.C.T. AND PER C.F. No. 8441374 AND 845478, R.P.R.M.C.T. AND DESIGNATED SURFACE SITES AND NON-EXCLUSIVE ACCESS EASEMENTS PER C.F. No. 881431, 881433, 2002106474 AND 2005133448, R.P.R.M.C.T. (DOES NOT AFFECT)
- 10H. EASEMENT TO GULF STATES UTILITIES COMPANY PER C.F. No. 853206, R.P.R.M.C.T. (DOES NOT AFFECT)
- 10I. 30' PIPELINE R.O.W. EASEMENT TO MUSTANG PIPELINE COMPANY PER C.F. No. 882788, R.P.R.M.C.T. (DOES NOT AFFECT)
- 10J. 60' DRAINAGE EASEMENT TO MONTGOMERY COUNTY PER C.F. No. 833469, R.P.R.M.C.T. AND CORRECTED AND AMENDED PER C.F. No. 200078253, R.P.R.M.C.T. (SUBJECT TO FLOT)
- 10K. 150' DRAINAGE EASEMENT TO CRIGHTON PARK LIMITED PER C.F. No. 2008114216, R.P.R.M.C.T. (DOES NOT AFFECT)
- 10L. MONUMENTATION AND LANDSCAPE EASEMENT TO 1275 WHITTINGTON LIMITED PER C.F. No. 201882100, R.P.R.M.C.T. AND ASSIGNED TO D.L. HORTON-TEXAS, LTD. PER C.F. No. 201882275, R.P.R.M.C.T. (DOES AFFECT / SHOWN HEREON)
- 10M. SURFACE USE AGREEMENTS PER C.F. No. 804106, 862282 AND 865482, R.P.R.M.C.T. AND DESIGNATED SURFACE SITES AND NON-EXCLUSIVE ACCESS EASEMENTS PER C.F. No. 881431, 881433, 2002106474 AND 2005133448, R.P.R.M.C.T. (DOES NOT AFFECT)
- 10N. SURFACE USE AGREEMENTS PER VOL. 1141, PG. 770 AND VOL. 1147, PG. 88, D.R.M.C.T. AND C.F. No. 812748 AND 848378, R.P.R.M.C.T. AND DESIGNATION OF SURFACE SITES AND NON-EXCLUSIVE ACCESS EASEMENTS PER C.F. No. 881431, 881433, 2002106474 AND 2005133448, R.P.R.M.C.T. (DOES NOT AFFECT)

BOUNDARY SURVEY

BEING A 22.472 ACRE TRACT OF LAND SITUATED IN THE IRA MILLMAN SURVEY, ABSTRACT NUMBER 340, AND THE THOMAS MILLER SURVEY, ABSTRACT NUMBER 365, MONTGOMERY COUNTY, TEXAS, BEING A PORTION OF THAT CERTAIN CALLED 145.33 ACRE TRACT OF LAND DESCRIBED IN INSTRUMENT TO CENTRAL TREE DEVELOPMENT L.L.C., RECORDED UNDER CLERK'S FILE NUMBER 2003059481 OF THE OFFICIAL PUBLIC RECORDS OF MONTGOMERY COUNTY, TEXAS (O.P.R.M.C.T.), SAID 22.472 ACRE TRACT BEING MORE PARTICULARLY DESCRIBED BY ATTACHED METES AND BOUNDS DESCRIPTION.

I HEREBY CERTIFY THAT THIS SURVEY WAS THIS DAY MADE UNDER MY SUPERVISION ON THE GROUND OF THE ABOVE DESCRIBED PROPERTY, AND THAT THE ABOVE PLAT OR DRAWING REFLECTS THE FINDINGS ON THE GROUND OF THE PROPERTY AT THE TIME AND THAT THIS SURVEY MEETS THE MINIMUM STANDARDS OF PRACTICES APPROVED BY THE TEXAS BOARD OF PROFESSIONAL LAND SURVEYING.

PROJ#07 NUMBER	241R_22-472ACRES
DATE	07/18/2022
DRAWN BY	CVE
CHECKED BY	AVJ
FIELD CREW	IN
REVISION 1	8/20/2022
REVISION 2	8/17/2022
REVISION 3	
REVISION 4	

PURCHASER: IRA MILLMAN, A-340
SURVEY: THOMAS MILLER, A-365
SUBJECT: 22.472 ACRES 8 EASEMENT
COUNTY: MONTGOMERY

A PORTION OF THIS PROPERTY APPEARS TO LIE WITHIN THE REGULATORY FLOODWAY PER GRAPHIC SCALING OF COMMUNITY PANEL NO. 4533820780 HAVING AN EFFECTIVE DATE OF 08/16/2014.

BASIS OF BEARINGS, BEARINGS AND DISTANCES SHOWN HEREON ARE BASED ON GPS OBSERVATIONS, NAVD83, GEOID 18, AND ARE REFERENCED TO THE NORTH AMERICAN DATUM OF 1983 (NAD83), TEXAS STATE PLANE COORDINATE SYSTEM, CENTRAL ZONE (TXC-4203), GRID MEASUREMENTS.

Thomas A. McIntyre
Registered Professional Land Surveyor No. 6921

