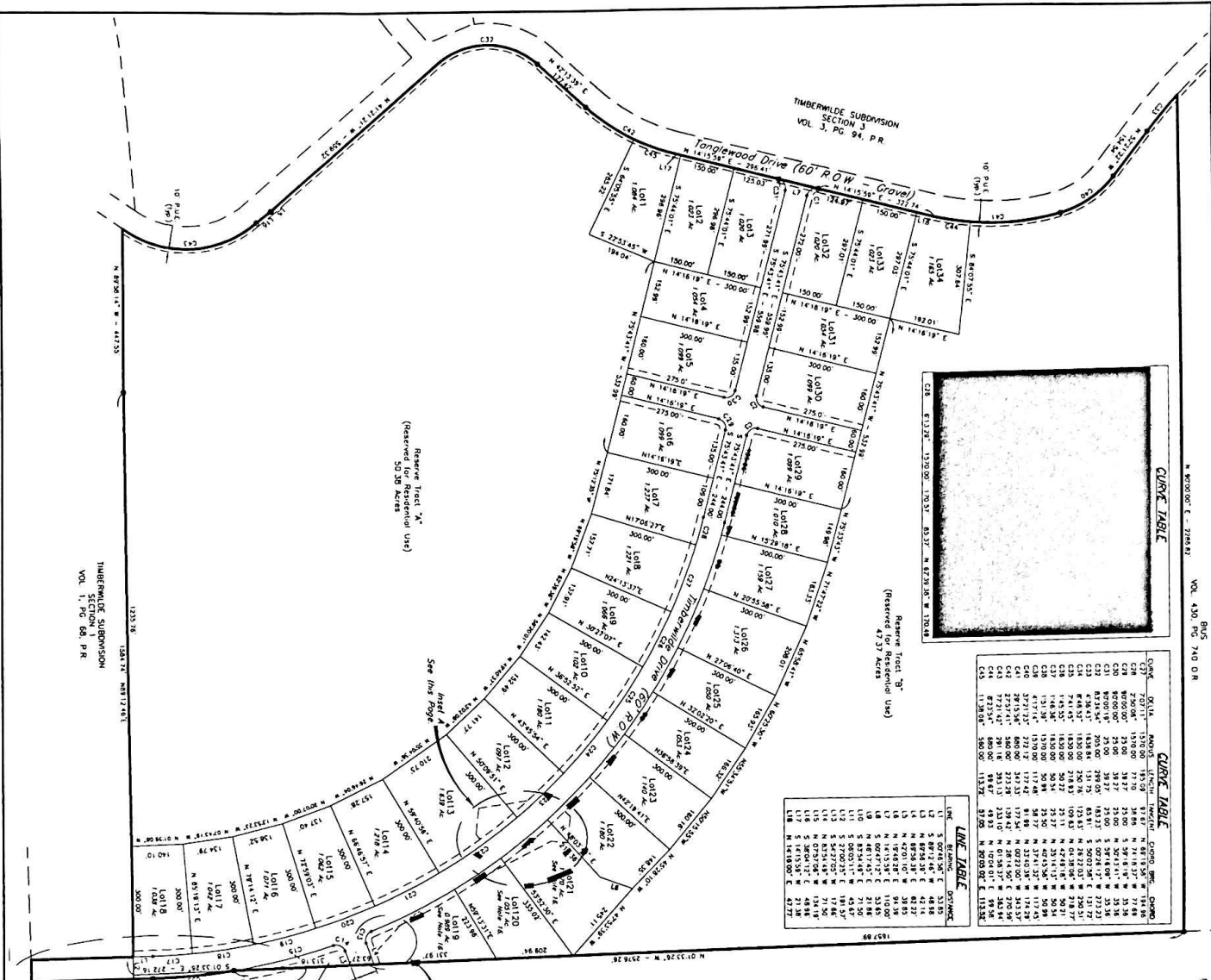


CURVE TABLE

CURVE NO.	CHORD BEARING	CHORD DIST.	TANGENT BEARING	TANGENT DIST.	CHORD BEARING	CHORD DIST.
C1	S 27°04'00" E	1310.00	71.70	34.68	N 71°14'57" W	77.48
C2	S 68°00'00" E	215.00	38.27	23.00	S 59°14'57" W	33.34
C3	S 84°00'00" E	100.00	16.99	11.33	S 45°00'00" W	16.00
C4	N 00°00'00" E	20.00	0.00	2.00	N 00°00'00" E	20.00
C5	N 00°00'00" E	20.00	0.00	2.00	N 00°00'00" E	20.00
C6	N 00°00'00" E	20.00	0.00	2.00	N 00°00'00" E	20.00
C7	N 00°00'00" E	20.00	0.00	2.00	N 00°00'00" E	20.00
C8	N 00°00'00" E	20.00	0.00	2.00	N 00°00'00" E	20.00
C9	N 00°00'00" E	20.00	0.00	2.00	N 00°00'00" E	20.00
C10	N 00°00'00" E	20.00	0.00	2.00	N 00°00'00" E	20.00
C11	N 00°00'00" E	20.00	0.00	2.00	N 00°00'00" E	20.00
C12	N 00°00'00" E	20.00	0.00	2.00	N 00°00'00" E	20.00
C13	N 00°00'00" E	20.00	0.00	2.00	N 00°00'00" E	20.00
C14	N 00°00'00" E	20.00	0.00	2.00	N 00°00'00" E	20.00
C15	N 00°00'00" E	20.00	0.00	2.00	N 00°00'00" E	20.00
C16	N 00°00'00" E	20.00	0.00	2.00	N 00°00'00" E	20.00
C17	N 00°00'00" E	20.00	0.00	2.00	N 00°00'00" E	20.00
C18	N 00°00'00" E	20.00	0.00	2.00	N 00°00'00" E	20.00
C19	N 00°00'00" E	20.00	0.00	2.00	N 00°00'00" E	20.00
C20	N 00°00'00" E	20.00	0.00	2.00	N 00°00'00" E	20.00
C21	N 00°00'00" E	20.00	0.00	2.00	N 00°00'00" E	20.00
C22	N 00°00'00" E	20.00	0.00	2.00	N 00°00'00" E	20.00
C23	N 00°00'00" E	20.00	0.00	2.00	N 00°00'00" E	20.00
C24	N 00°00'00" E	20.00	0.00	2.00	N 00°00'00" E	20.00
C25	N 00°00'00" E	20.00	0.00	2.00	N 00°00'00" E	20.00
C26	N 00°00'00" E	20.00	0.00	2.00	N 00°00'00" E	20.00
C27	N 00°00'00" E	20.00	0.00	2.00	N 00°00'00" E	20.00
C28	N 00°00'00" E	20.00	0.00	2.00	N 00°00'00" E	20.00
C29	N 00°00'00" E	20.00	0.00	2.00	N 00°00'00" E	20.00
C30	N 00°00'00" E	20.00	0.00	2.00	N 00°00'00" E	20.00
C31	N 00°00'00" E	20.00	0.00	2.00	N 00°00'00" E	20.00
C32	N 00°00'00" E	20.00	0.00	2.00	N 00°00'00" E	20.00
C33	N 00°00'00" E	20.00	0.00	2.00	N 00°00'00" E	20.00
C34	N 00°00'00" E	20.00	0.00	2.00	N 00°00'00" E	20.00
C35	N 00°00'00" E	20.00	0.00	2.00	N 00°00'00" E	20.00
C36	N 00°00'00" E	20.00	0.00	2.00	N 00°00'00" E	20.00
C37	N 00°00'00" E	20.00	0.00	2.00	N 00°00'00" E	20.00
C38	N 00°00'00" E	20.00	0.00	2.00	N 00°00'00" E	20.00
C39	N 00°00'00" E	20.00	0.00	2.00	N 00°00'00" E	20.00
C40	N 00°00'00" E	20.00	0.00	2.00	N 00°00'00" E	20.00
C41	N 00°00'00" E	20.00	0.00	2.00	N 00°00'00" E	20.00
C42	N 00°00'00" E	20.00	0.00	2.00	N 00°00'00" E	20.00
C43	N 00°00'00" E	20.00	0.00	2.00	N 00°00'00" E	20.00
C44	N 00°00'00" E	20.00	0.00	2.00	N 00°00'00" E	20.00
C45	N 00°00'00" E	20.00	0.00	2.00	N 00°00'00" E	20.00

LINE TABLE

LINE NO.	BEARING	DISTANCE	BEARING	DISTANCE	BEARING	DISTANCE
L1	S 00°00'00" E	32.85	N 00°00'00" E	32.85	S 00°00'00" E	32.85
L2	S 88°12'46" E	44.88	N 01°47'14" W	44.88	S 88°12'46" E	44.88
L3	N 42°01'02" W	38.55	S 47°58'58" E	38.55	N 42°01'02" W	38.55
L4	N 89°54'38" E	88.27	S 0°05'22" W	88.27	N 89°54'38" E	88.27
L5	N 14°13'31" E	116.00	S 75°46'29" W	116.00	N 14°13'31" E	116.00
L6	N 00°00'00" E	116.00	S 00°00'00" E	116.00	N 00°00'00" E	116.00
L7	N 00°00'00" E	116.00	S 00°00'00" E	116.00	N 00°00'00" E	116.00
L8	N 00°00'00" E	116.00	S 00°00'00" E	116.00	N 00°00'00" E	116.00
L9	N 00°00'00" E	116.00	S 00°00'00" E	116.00	N 00°00'00" E	116.00
L10	N 00°00'00" E	116.00	S 00°00'00" E	116.00	N 00°00'00" E	116.00
L11	N 00°00'00" E	116.00	S 00°00'00" E	116.00	N 00°00'00" E	116.00
L12	N 00°00'00" E	116.00	S 00°00'00" E	116.00	N 00°00'00" E	116.00
L13	N 00°00'00" E	116.00	S 00°00'00" E	116.00	N 00°00'00" E	116.00
L14	N 00°00'00" E	116.00	S 00°00'00" E	116.00	N 00°00'00" E	116.00
L15	N 00°00'00" E	116.00	S 00°00'00" E	116.00	N 00°00'00" E	116.00
L16	N 00°00'00" E	116.00	S 00°00'00" E	116.00	N 00°00'00" E	116.00
L17	N 00°00'00" E	116.00	S 00°00'00" E	116.00	N 00°00'00" E	116.00
L18	N 00°00'00" E	116.00	S 00°00'00" E	116.00	N 00°00'00" E	116.00
L19	N 00°00'00" E	116.00	S 00°00'00" E	116.00	N 00°00'00" E	116.00
L20	N 00°00'00" E	116.00	S 00°00'00" E	116.00	N 00°00'00" E	116.00



- NOTES**
1. Portions of this plat are based on the north lines of Block 500, Timberwilde Addition, Section 1, as recorded in Volume 1, Page 68 of the Plat Records of Walker County, Texas.
 2. Unless otherwise noted, corners shown hereon are 1/2" iron rods set with orange plastic caps stamped "R.L. Long, M.S. Reg. No. 2538, 600 of the Official Record of the plat recorded, and a portion of the property recorded in Volume 237, Page 729 of the Plat Records of Walker County, Texas.
 3. The development shall consist of the construction of 34 residential lots.
 4. Building setbacks shall be as follows:
 - A. Side street setback, 10'
 - B. Side and rear setback, 10'
 - C. Side street setback, 25'
 5. PUBLIC UTILITIES: All public easements donated on this plat are dedicated to the use of the public forever. Any public utility, including water, gas, electric and sewer lines, for construction, reconstruction, inspection, patrolling, maintaining and adding to or removing any part of its respective system property owned by the public utility, including the City of Huntsville, shall have the right to move and keep moved all or part of any building, fence, trees, shrubs, other improvements or maintenance, or efficiency of its respective system or any of its easements shown on this plat. Neither the City of Huntsville nor any public utility shall be responsible for removal or destruction of any obstructions in the public easements to removal or destruction of any obstructions in the public easements.
 6. PUBLIC UTILITIES: All public easements donated on this plat are dedicated to the use of the public forever. Any public utility, including water, gas, electric and sewer lines, for construction, reconstruction, inspection, patrolling, maintaining and adding to or removing any part of its respective system property owned by the public utility, including the City of Huntsville, shall have the right to move and keep moved all or part of any building, fence, trees, shrubs, other improvements or maintenance, or efficiency of its respective system or any of its easements shown on this plat. Neither the City of Huntsville nor any public utility shall be responsible for removal or destruction of any obstructions in the public easements to removal or destruction of any obstructions in the public easements.
 7. A 15' public utility easement and drainage easement shall be provided adjacent to all street R.O.W.'s, unless noted otherwise.
 8. A 10' public utility easement and drainage easement shall be provided along all side and rear lot lines.
 9. A 5' x 15' Guy Easement shall be provided at all locations, where guy wires are required for the electrical utilities. Refer to Sheet 2 for Utility Guy Easement Details.
 10. All ROW shall be 60' wide, unless noted otherwise.
 11. The private sewage facility may be installed in the lot on the plat, subject to the approval of the City of Huntsville, the Walker County Planning and Development Department under the provisions of the Walker County Septic System Regulations which were made a part of the Walker County Subdivision Regulation which is recorded in Volume 237, Page 729 of the Plat Records of Walker County, Texas.
 12. The Reserve and Private Pool, area in Section 3 of Timberwilde shall be as shown on this plat.
 13. Approver's Variance:
 - A. Variance request to allow alternate sewage collection system (Section 504.1) Approved 07/12/04, Timberwilde Subdivision.
 - B. Section 504.1) Approved 07/12/04, Timberwilde Subdivision. (Section 1203.1) Approved 07/12/04
 14. The property is located in the Unincorporated Zone X and does not lie within the 100-year flood plain as shown on the FIRM (Flood Insurance Rate Map), MAP NUMBER 480539 0105 C, Map Revised MAY 7, 2001.
 15. Before development of the reserve tracts, a plat of the tracts shall be filed with the City of Huntsville, Texas, according to the Development Code of the City of Huntsville, Texas.
 16. Access Driveways within the drainage easements for these lots shall be designed by a licensed professional engineer of the State of Texas.

LOCATION MAP

SCALE: 1" = 2,000'

Abbreviations

G.P. Generated on Property Line
 O.R. Official Record
 P.R. Plat Records
 P.U.E. Public Utility Easement
 P.U.L. Public Utility Line
 R.O.W. Right-of-way Line
 U.E. Utility Easement

Final Plat Details:

FINAL PLAT
 TIMBERWILDE SUBDIVISION,
 SECTION 4
 141.43 ACRE TRACT
 Consisting of 34 Lots and 2 Reserves
 City of Huntsville
 P.D. Randolph Survey, A-469 and
 W. Ferguson Survey, A-199
 Walker County, Texas
 Date: April 2005